

# My Inventory



## What's new in version 1.7

(c) Thomas Koslowsky

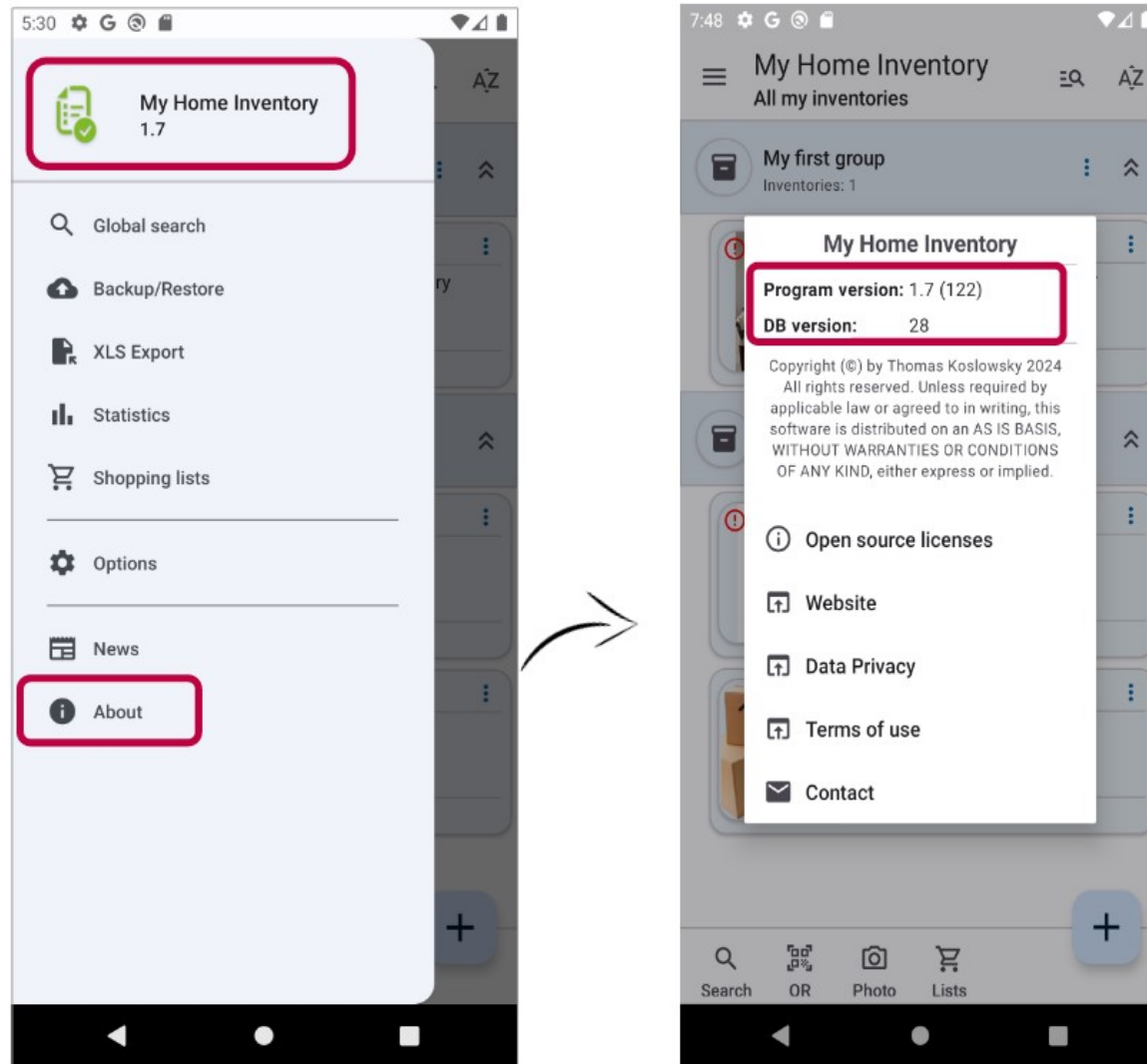
Internet: [www.thomaskoslowsky.com](http://www.thomaskoslowsky.com)

Mail: [thomas@thomaskoslowsky.com](mailto:thomas@thomaskoslowsky.com)

Application website: [www.miinventariopersonal.com](http://www.miinventariopersonal.com)

# 1 Introduction

This document includes what's new in version 1.7. You can check the version you have installed directly in the application, through the “main menu” -> “About”.



## 2 What's new in this version

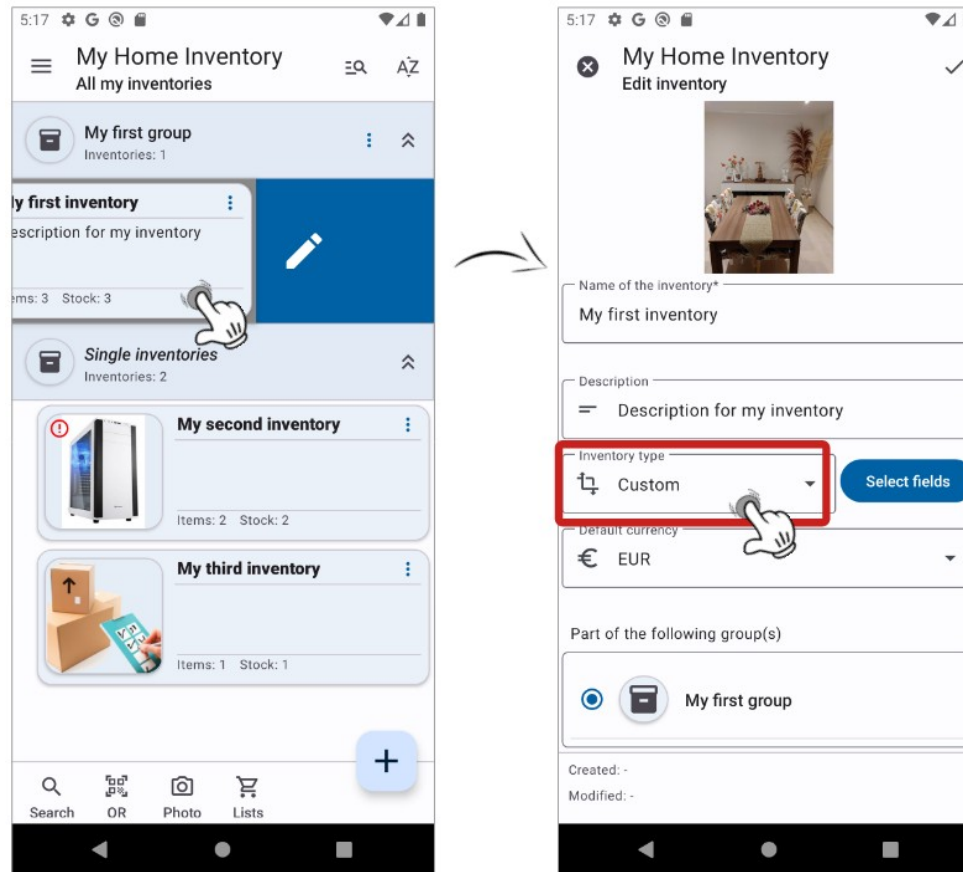
This chapter describes the added or improved functionalities in more detail:

### Content of this chapter

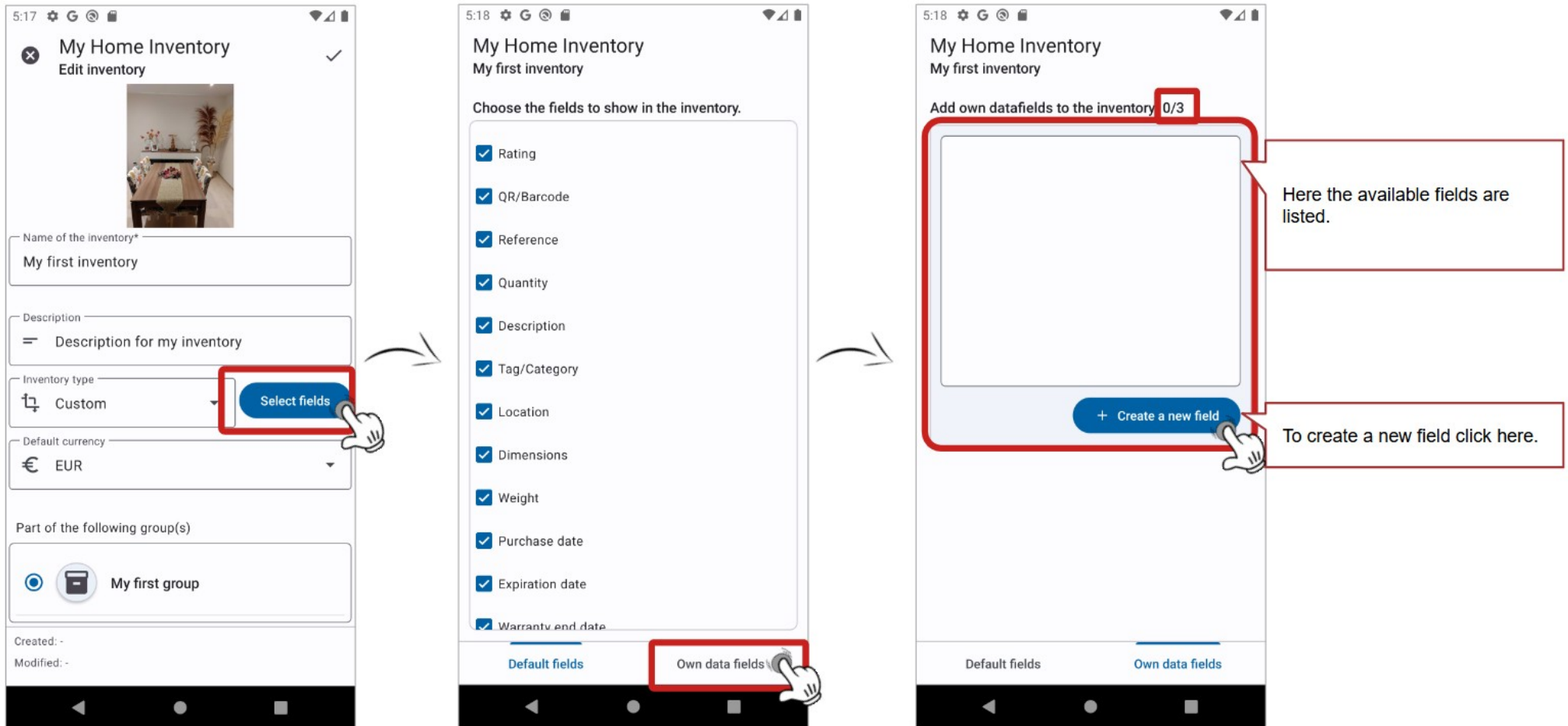
|   |    |
|---|----|
| 2.1 Create and add your own fields to inventories.....  | 4  |
| 2.2 Other improvements and corrections (bug-fixes)..... | 11 |

## 2.1 Create and add your own fields to inventories

You now have the option to create and add up to 3 own fields to each inventory/item. This option is available for “Customized” type inventories, which also allows you to adjust which standard fields are displayed in the inventory. To change the inventory type, edit the inventory properties and click on the “Inventory Type” drop-down to choose “Customized.”

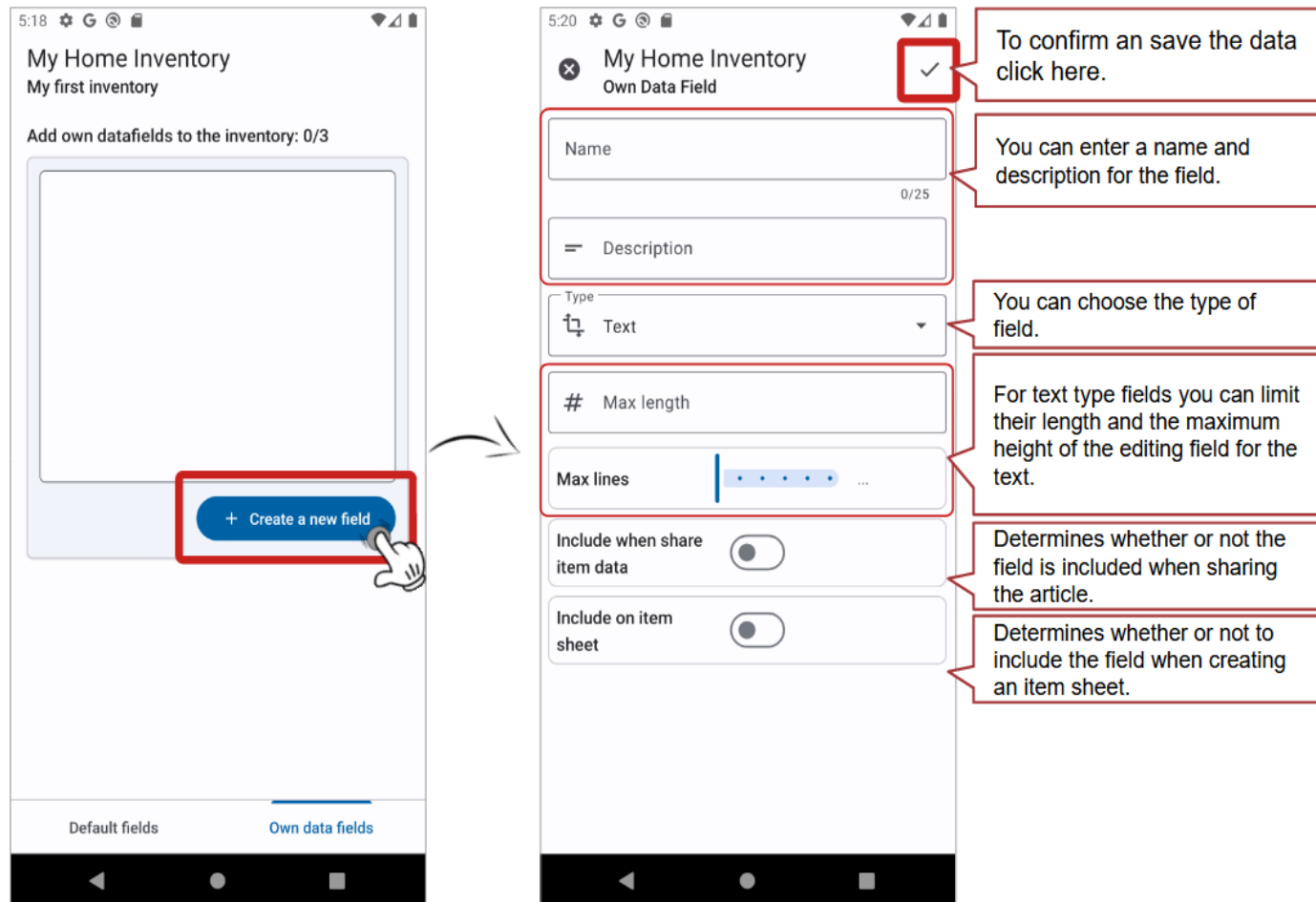


Next click on the “Choose fields” button, and then click on the “Own fields” tab. The next view will display a list of all available own fields. To add a new field, click “Add a field”.

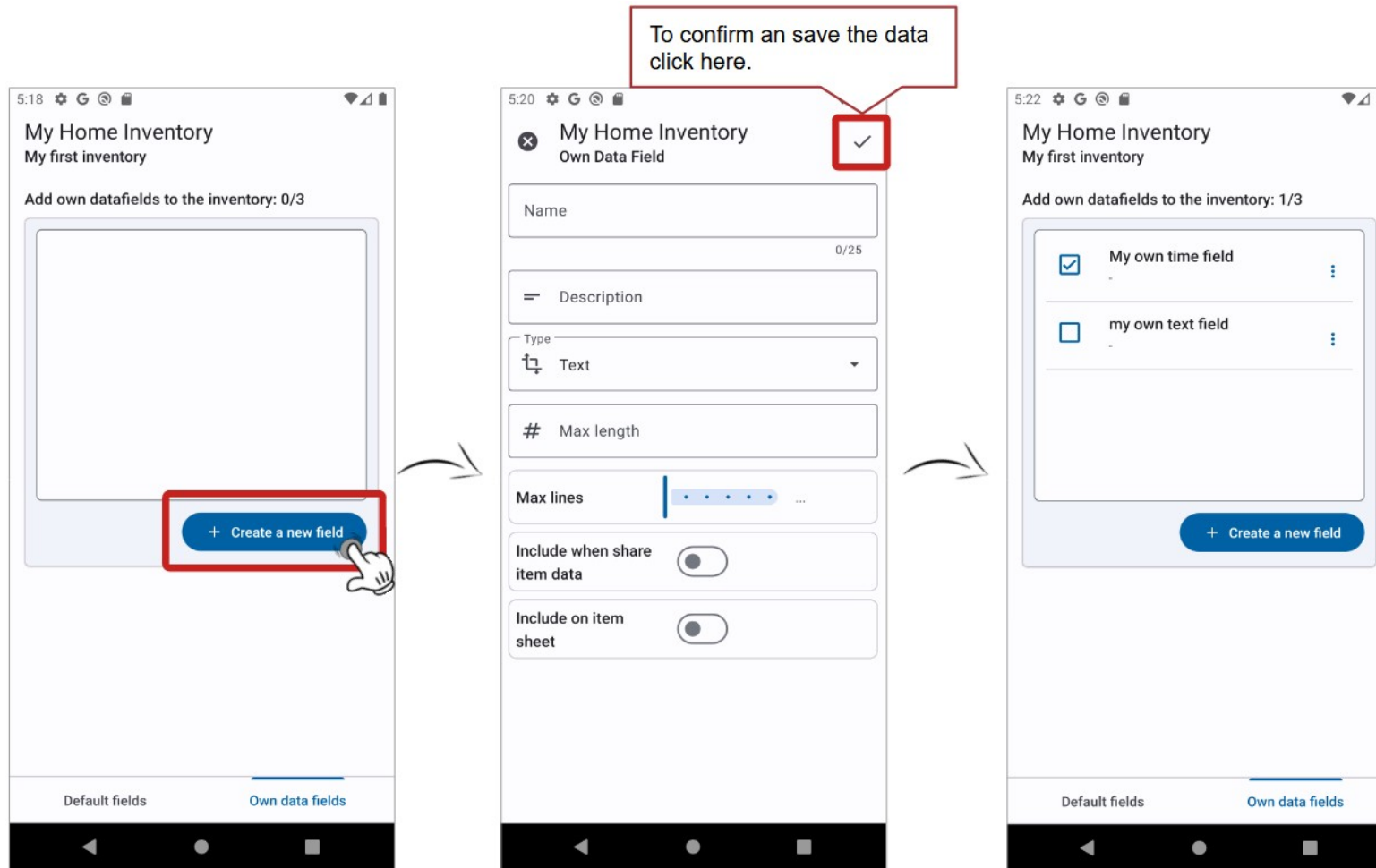


In the view of creating/editing your own field you can indicate a name that will be used to display the field in the article. You can also choose between different field types, which will make entering data easier.

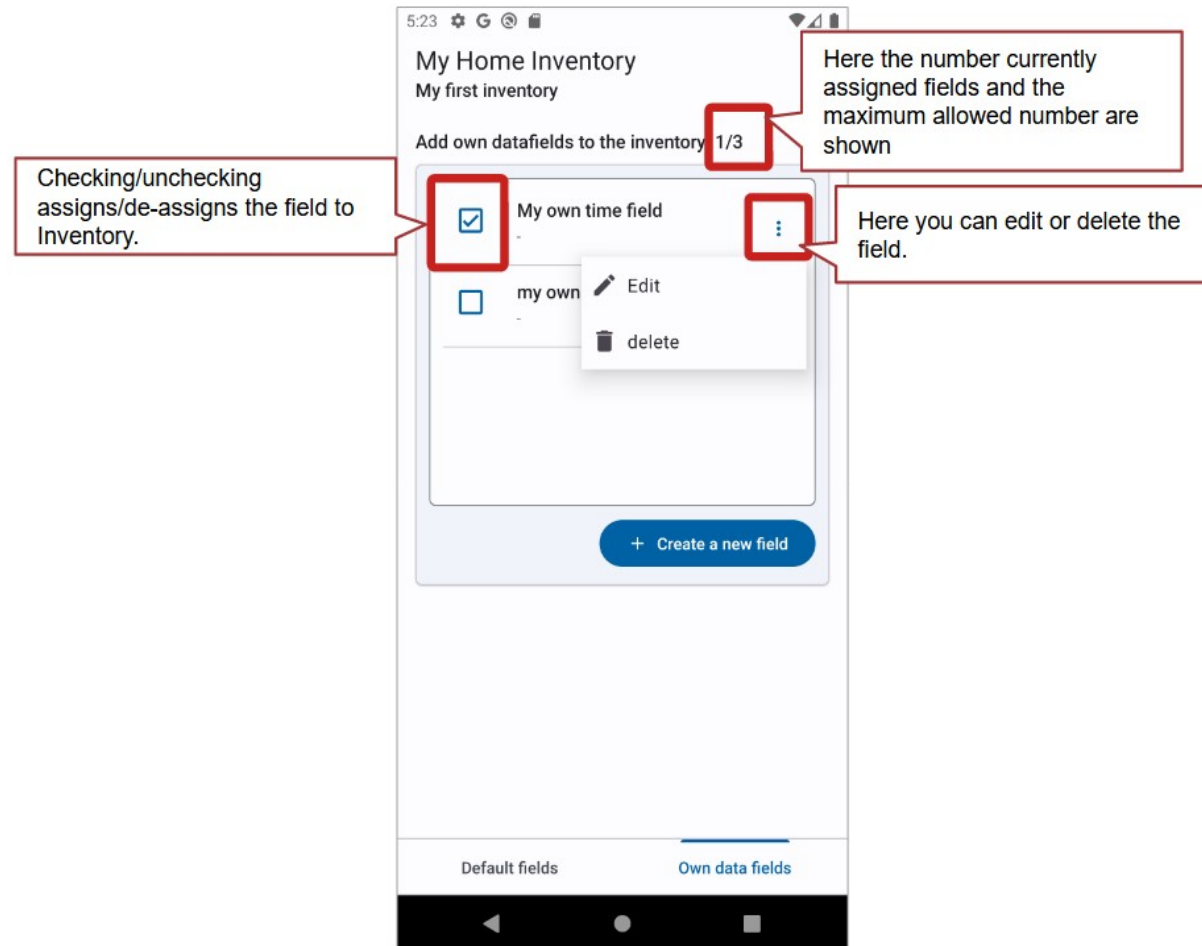
Please note that if you later on change the type of a data field, existing data that does not correspond to the new type may not be displayed/edited correctly. For example, if a text field is changed to a date or time field.



The fields you create will be added to the list of your own fields.

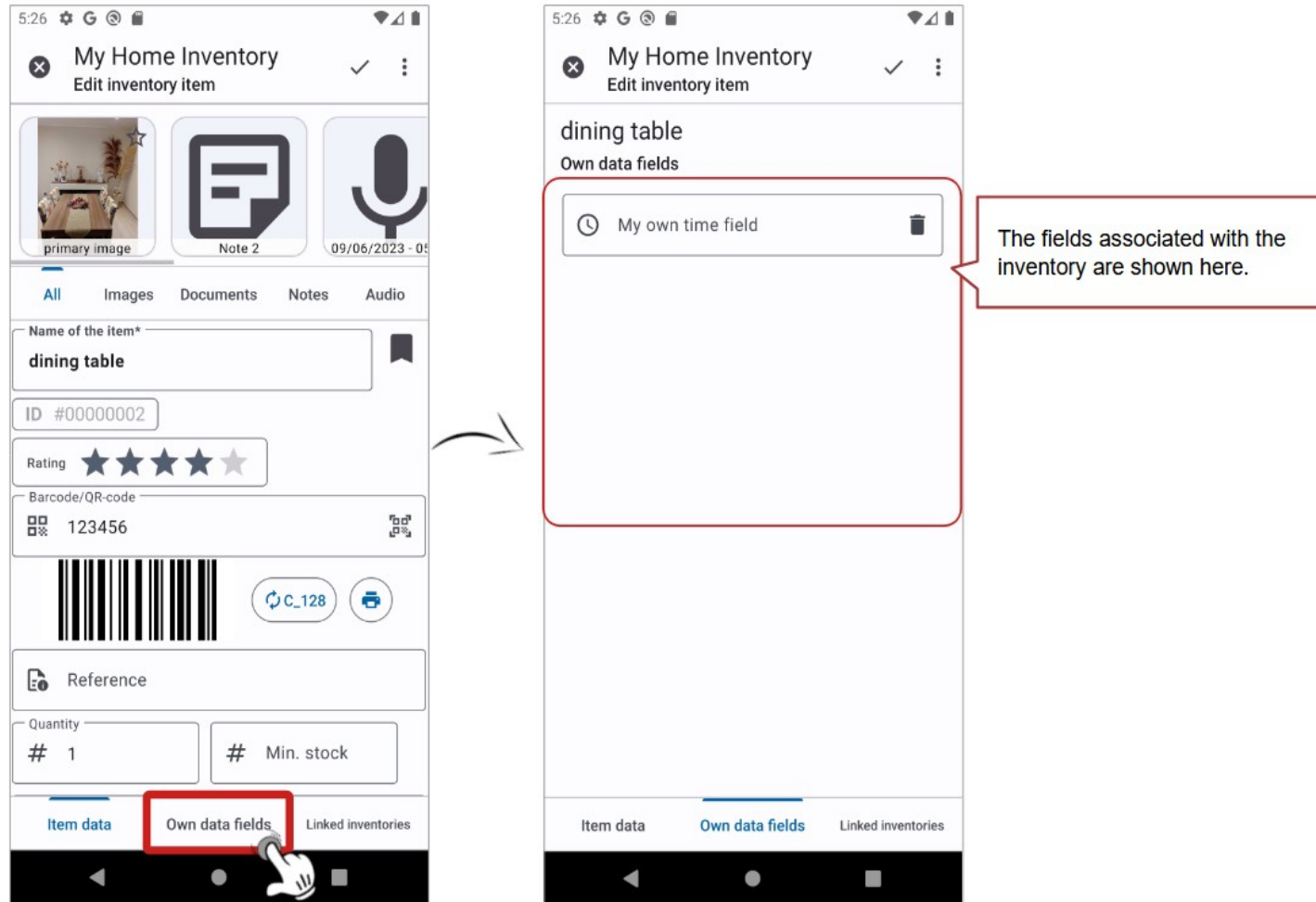


You can mark up to 3 fields to add them to an inventory. You can only uncheck a field if it does not contain data in the inventory. When you delete a field, the data it contains will also be deleted. The app will show you a warning about this and you can decide to proceed or not.





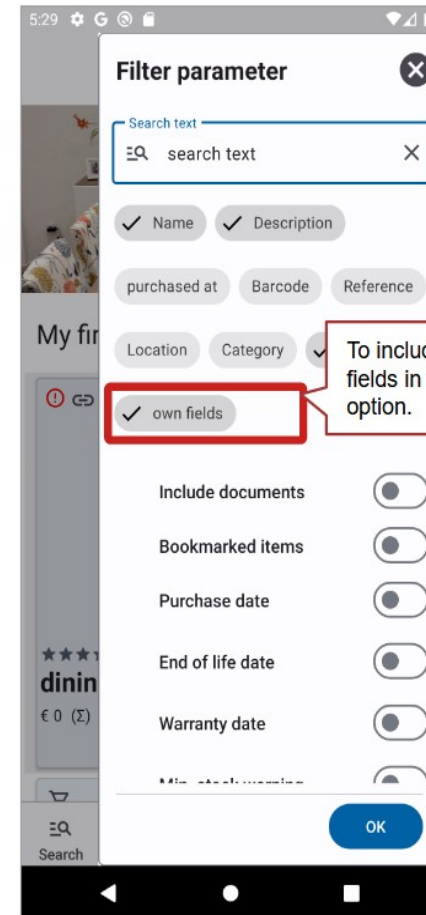
When you edit an inventory item with own fields, these will be displayed in the "Own Fields" tab and you can enter/modify the data there.



Own data fields will be displayed in the article display, at the end of the view. You can also indicate in the search to include own data fields.



Data from your own fields is displayed at the end of the view. They are only shown when they contain data.



## 2.2 Other improvements and corrections (bug-fixes)

This version includes the following improvements/fixes:

| N.º of issue | Description of the improvement/fix issue   |
|--------------|--|
| #392         | Application crash: when rotating the screen in the application views in case they have an options field displayed. |