

My Inventory



What's new in version 1.8.12

(c) Thomas Koslowsky

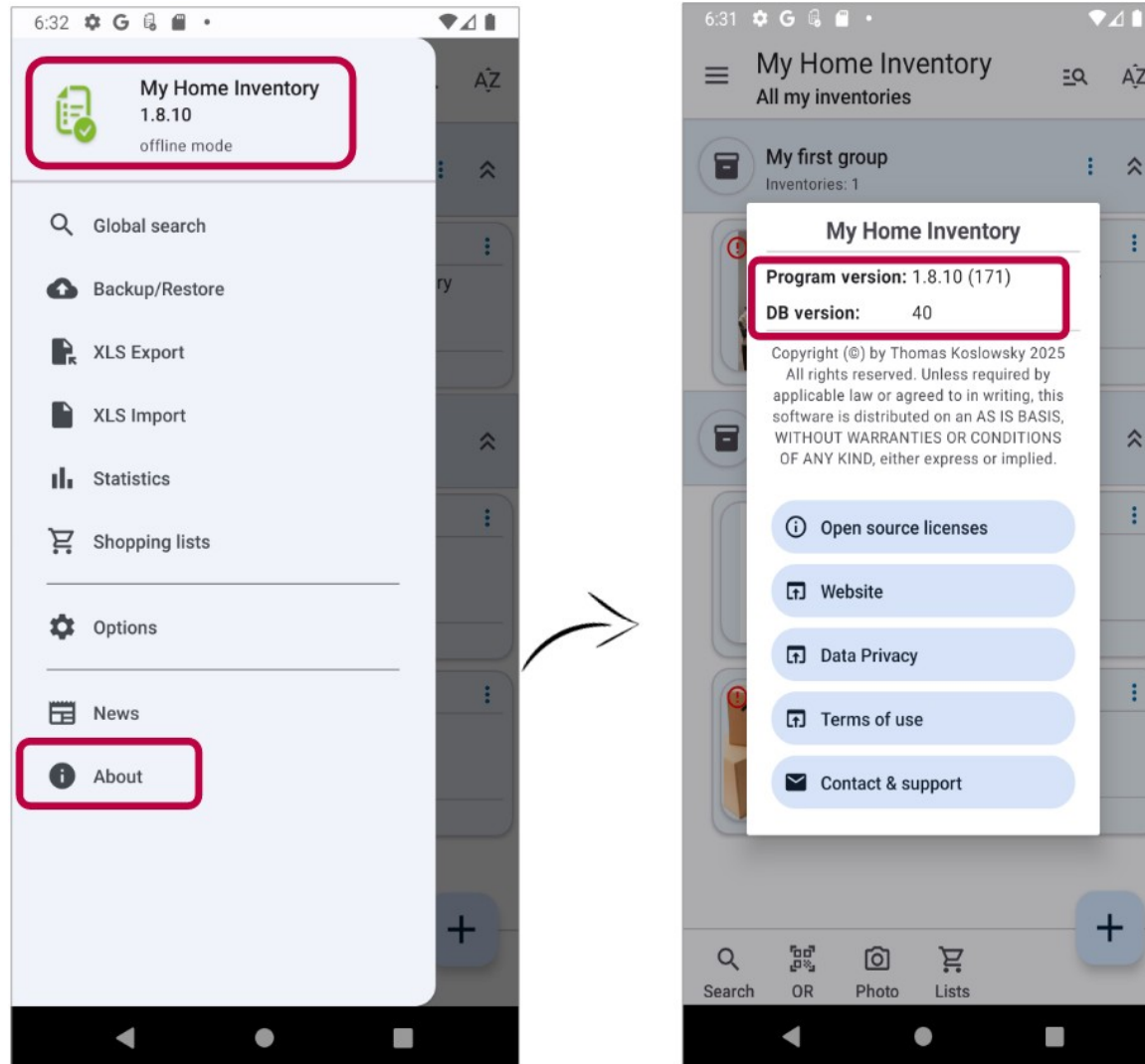
Internet: www.thomaskoslowsky.com

Mail: thomas@thomaskoslowsky.com

Application website: www.miinventariopersonal.com

1 Introduction

This document includes what's new in version 1.8.12. You can check the version you have installed directly in the application, through the “main menu” -> “About”.



2 What's new in this version

This chapter describes the added or improved functionalities in more detail:

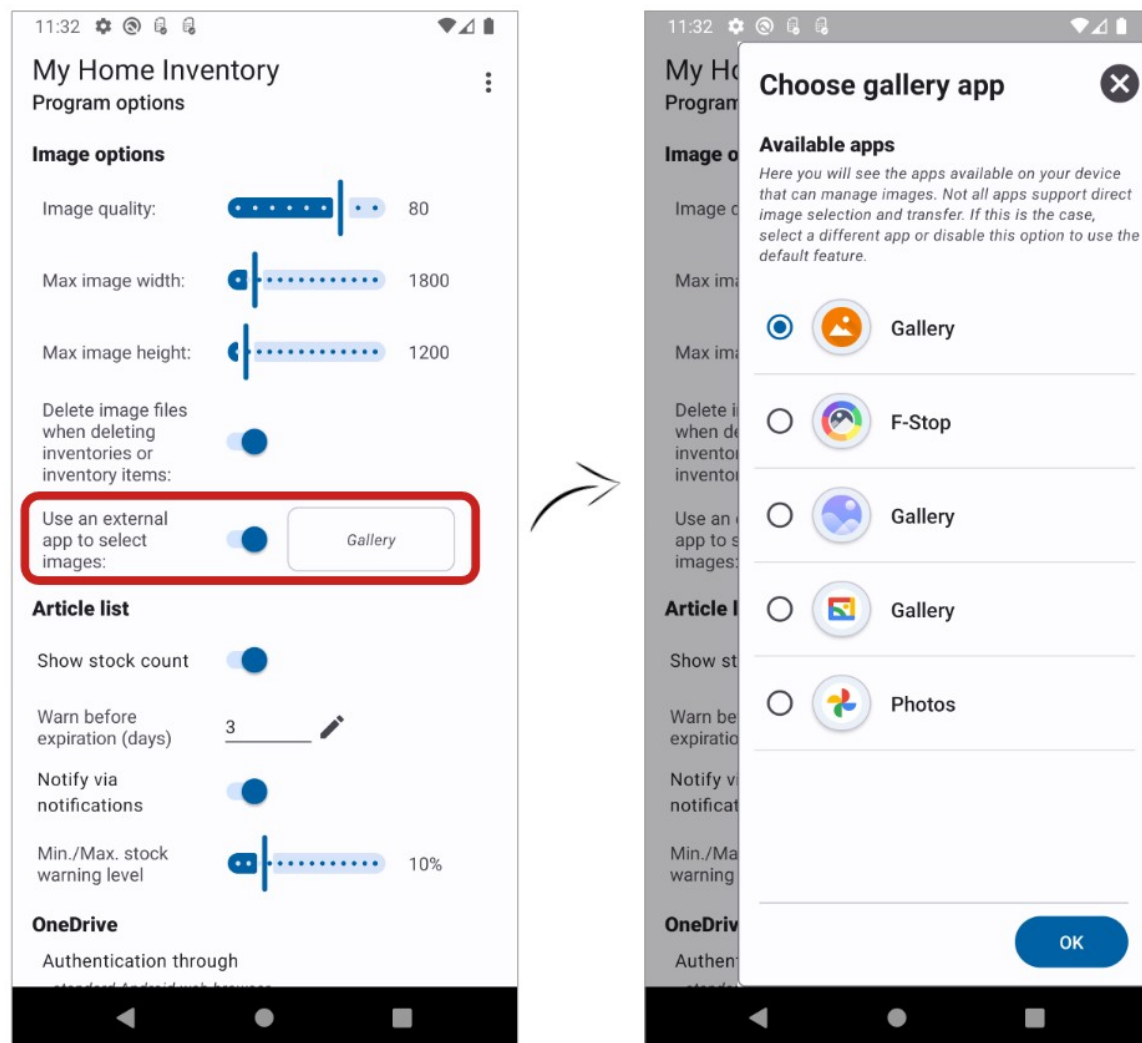
Content of this chapter

2.1 Use of an external gallery/photo app to select images..... 4

2.2 Other improvements and corrections (bug-fixes)..... 5

2.1 Use of an external gallery/photo app to select images

In the program options, you can specify whether you want to use an external gallery/photo app for image selection when adding image files to your inventory or to items. This will display the apps available on your device that can be used to manage images. However, not all apps support direct image selection and import. In this case, select a different app or deactivate this option to continue using the default function.



2.2 Other improvements and corrections (bug-fixes)

This version includes the following improvements/fixes:

| N.º of issue | Description of the improvement/fixed issue |
|--------------|---|
| #537 | Inventory items - share - inactive data fields are shared |
| #538 | Inventory items - share - decimal format is not the localized format |
| #539 | Currency format – PYG has no symbol representation |
| #542 | Inventory export from the inventory menu - is not filtered correctly in the export dialog |