

My Inventory



What's new in version 1.8.1

(c) Thomas Koslowsky

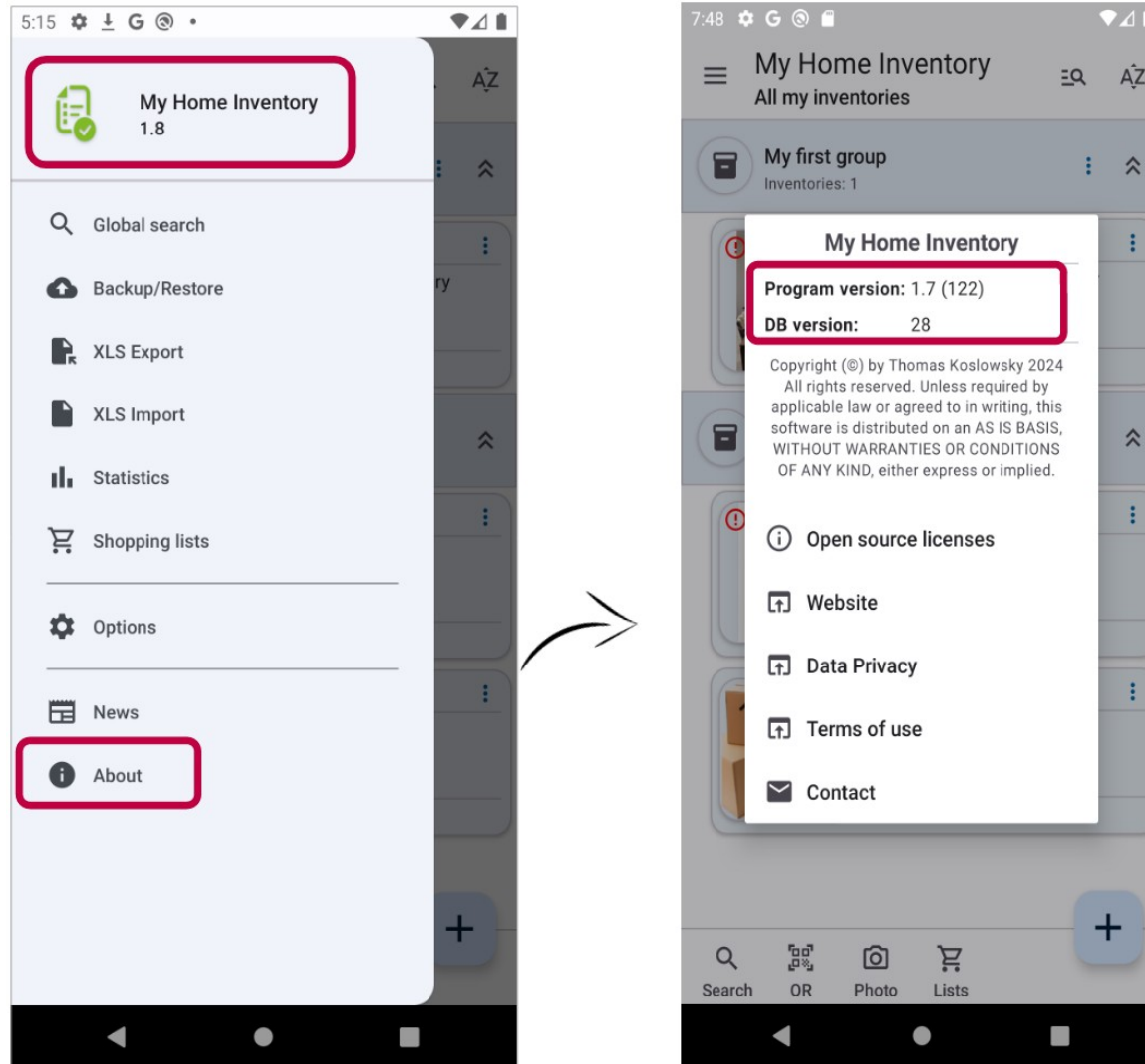
Internet: www.thomaskoslowsky.com

Mail: thomas@thomaskoslowsky.com

Application website: www.miinventariopersonal.com

1 Introduction

This document includes what's new in version 1.8.1. You can check the version you have installed directly in the application, through the “main menu” -> “About”.



2 What's new in this version

This chapter describes the added or improved functionalities in more detail:

Content of this chapter

2.1 Updated statistic function.....	4
2.2 Other improvements and corrections (bug-fixes).....	5

2.1 Updated statistic function

The statistics function has been updated and now also shows sub-inventories. Details about locations and item categories can also be included.

My Home Inventory 1.8.1

Global search

Backup/Restore

XLS Export

XLS Import

Statistics

Shopping lists

Options

News

About

My Home Inventory Statistics

Show: Location Category

My first inventory

n° items:	3 (4)
n° stock:	3 (4)
n° expired:	1 (1)
n° no stock:	0 (0)
\$ stock Σ:	EUR: 0.00 USD: 0.00
\$ unexpired:	EUR: 0.00 USD: 0.00
\$ expired:	EUR: 0.00
\$ aggr. stock Σ	EUR: 10.00 USD: 0.00
aggr. unexpired:	EUR: 10.00 USD: 0.00
aggr. expired:	EUR: 0.00

Closet

n° items:	1 (1)
n° stock:	1 (1)
n° expired:	0 (0)
n° no stock:	0 (0)
\$ stock Σ:	EUR: 10.00
\$ unexpired:	EUR: 10.00
\$ expired:	-
\$ aggr. stock Σ	EUR: 10.00
\$ aggr. unexpired:	EUR: 10.00

Here you can add additional information.

The quantities are shown here. In parentheses () the accumulated values, including the respective sub-inventories.

Here the accumulated monetary values are shown, including sub-inventories.

2.2 Other improvements and corrections (bug-fixes)

This version includes the following improvements/fixes:

N.º of issue	Description of the improvement/fixed issue
#410	Expanded error messages for data backup and restore.
#411	Currencies should be displayed in the item view with 2 decimal places.
#412	Show a preview image for PDF files added as files
#413	Show a preview image for images added as files
#415	After a search, only inventories that contain matches should be displayed in the global search.
#416	When exporting multiple inventories, custom fields from the predecessors are displayed