

My Inventory



What's new in version 1.8.2

(c) Thomas Koslowsky

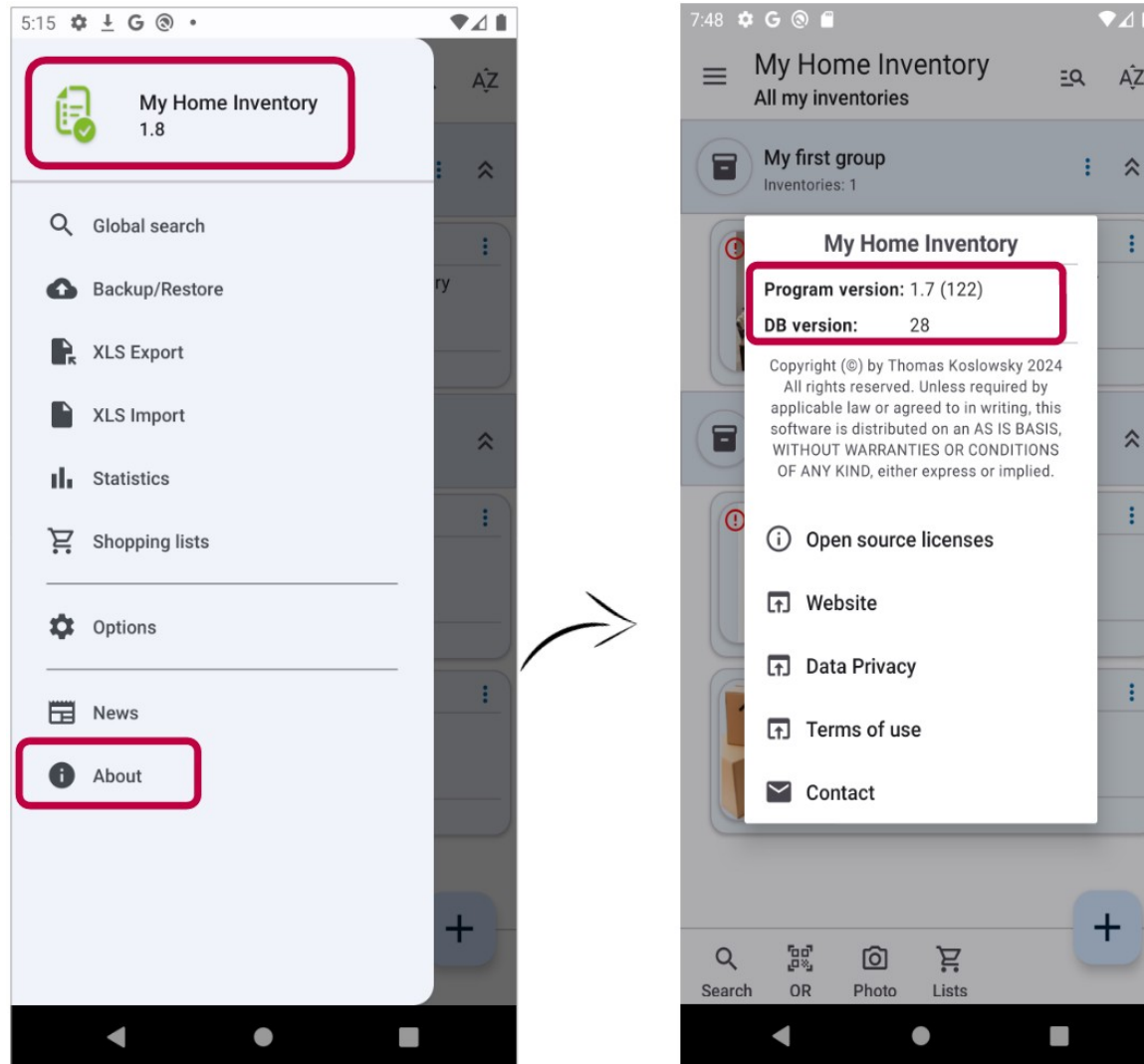
Internet: www.thomaskoslowsky.com

Mail: thomas@thomaskoslowsky.com

Application website: www.miinventariopersonal.com

1 Introduction

This document includes what's new in version 1.8.2. You can check the version you have installed directly in the application, through the “main menu” -> “About”.



2 What's new in this version

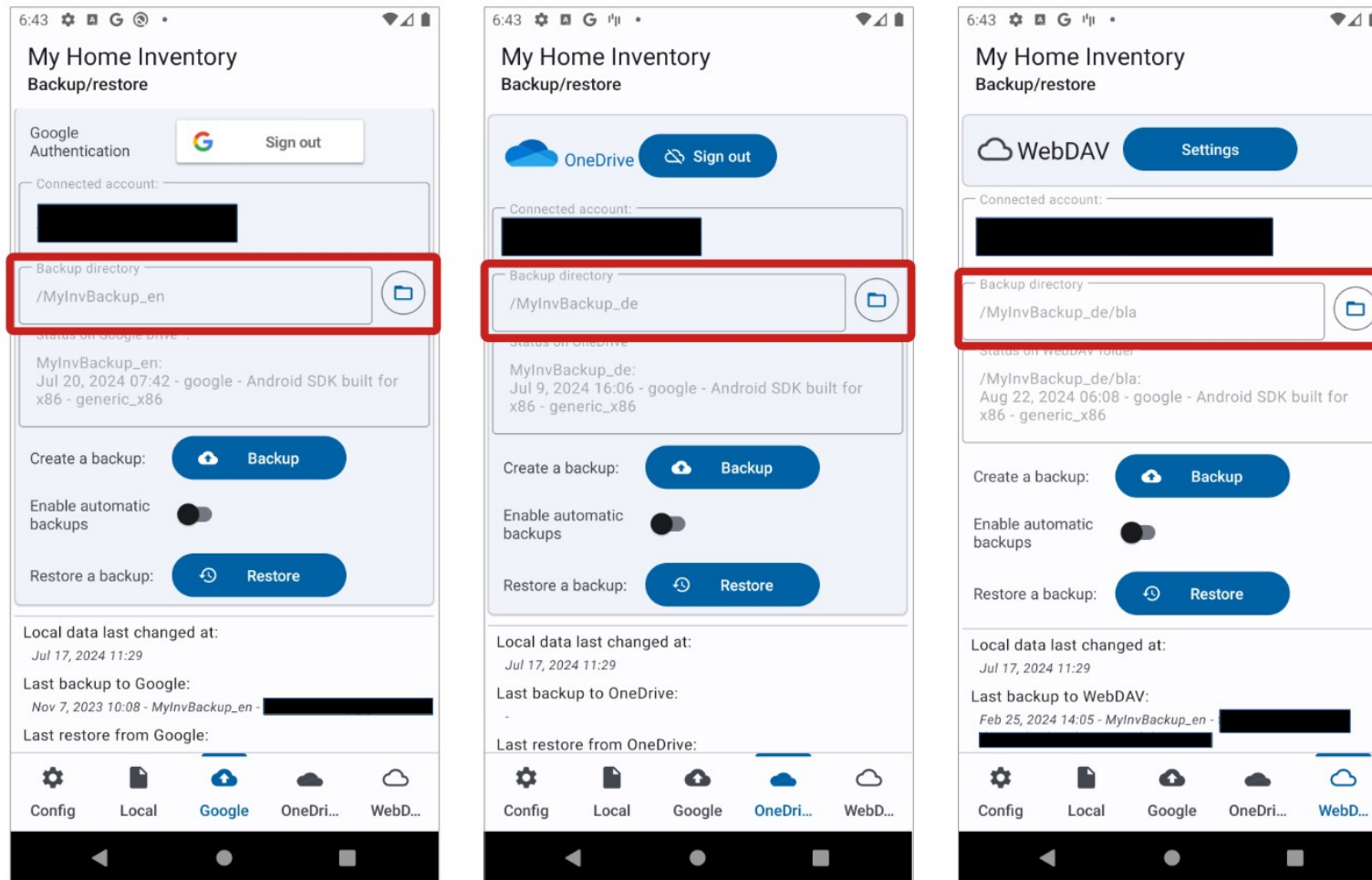
This chapter describes the added or improved functionalities in more detail:

Content of this chapter

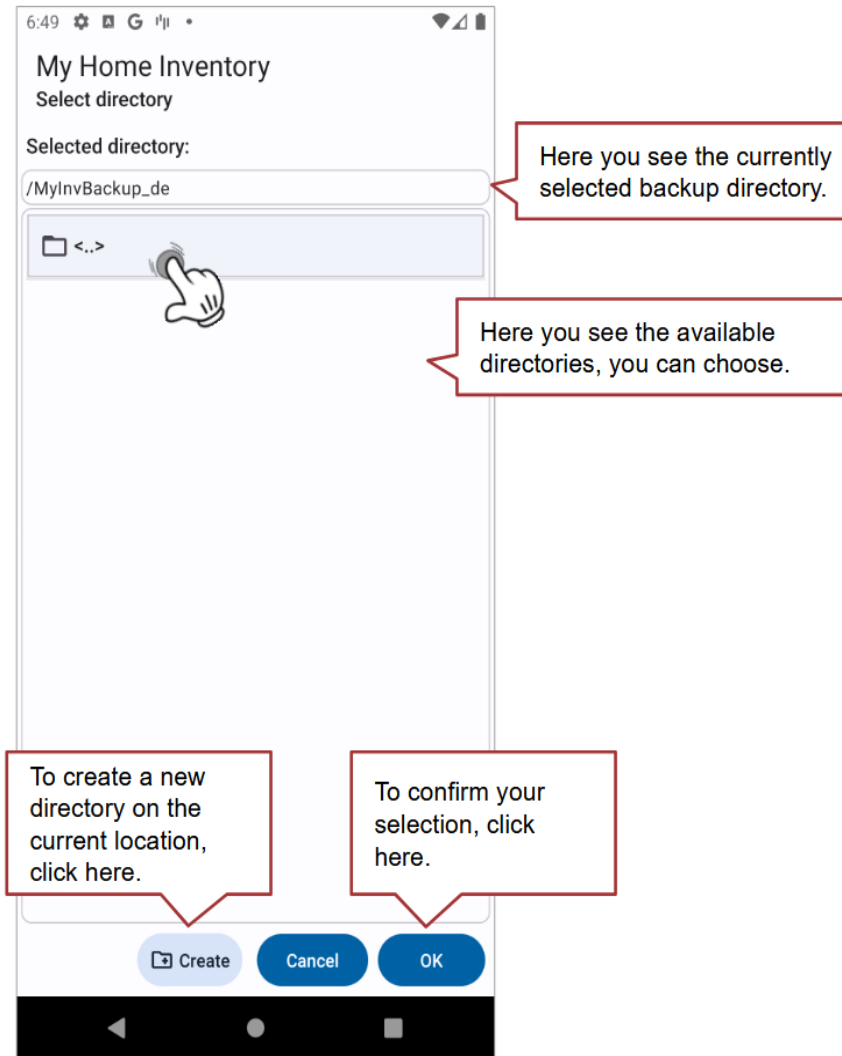
2.1 Selectable backup directory for online backups.....	4
2.1.1 Limitations.....	6
2.2 Other improvements and corrections (bug-fixes).....	7

2.1 Selectable backup directory for online backups

By clicking on the folder symbol, you can now change the default folder and select another directory on your online account.



After opening the directory selector you can navigate through the existing directory structure, create a new directory and choose a directory as backup target/restore source.



2.1.1 Limitations

- **Google Drive™**
Due to the application security configuration, the app does not see any documents or folders you created on your Google Drive.

2.2 Other improvements and corrections (bug-fixes)

This version includes the following improvements/fixes:

N.º of issue	Description of the improvement/fix issue
#442	Statistics - sum for elements without category or location does not work correctly in the detail view
#438	When receiving a file (share), no sub-inventories were displayed.
#439	The sub-inventories are not displayed in ascending order in the list view.
#435	The Excel import should not allow re-import after the import is complete.
#428	Edit inventory item - Category/Location/Purchased at picklist should include a global selection
#421	The statistics function should allow the selection of an inventory.
#409	The shopping list should show the sum of the list items.
#422	Sub-inventory icon is not displayed correctly in dark mode.