

My Inventory



What's new in version 1.8.6

(c) Thomas Koslowsky

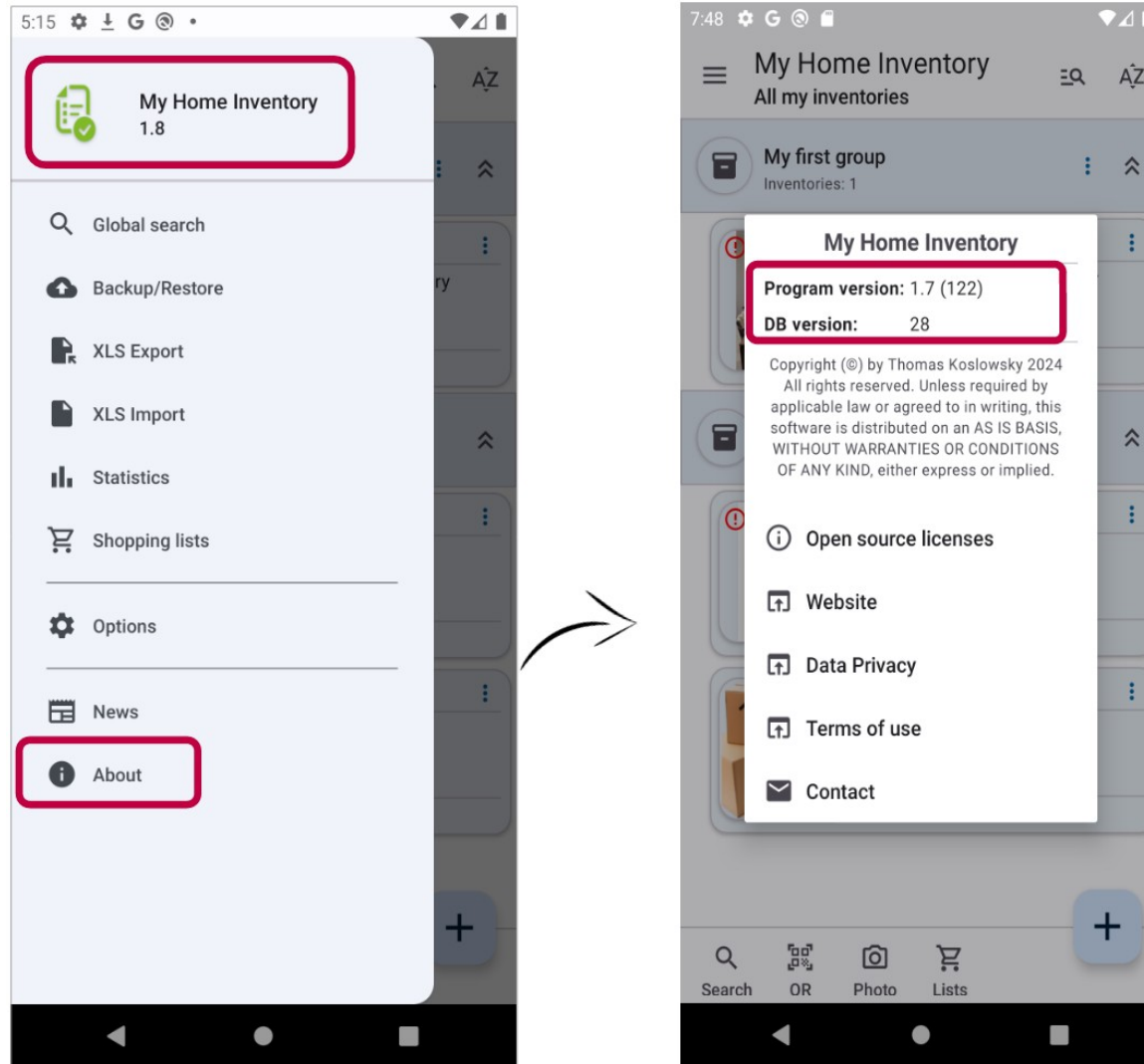
Internet: www.thomaskoslowsky.com

Mail: thomas@thomaskoslowsky.com

Application website: www.miinventariopersonal.com

1 Introduction

This document includes what's new in version 1.8.6. You can check the version you have installed directly in the application, through the “main menu” -> “About”.



2 What's new in this version

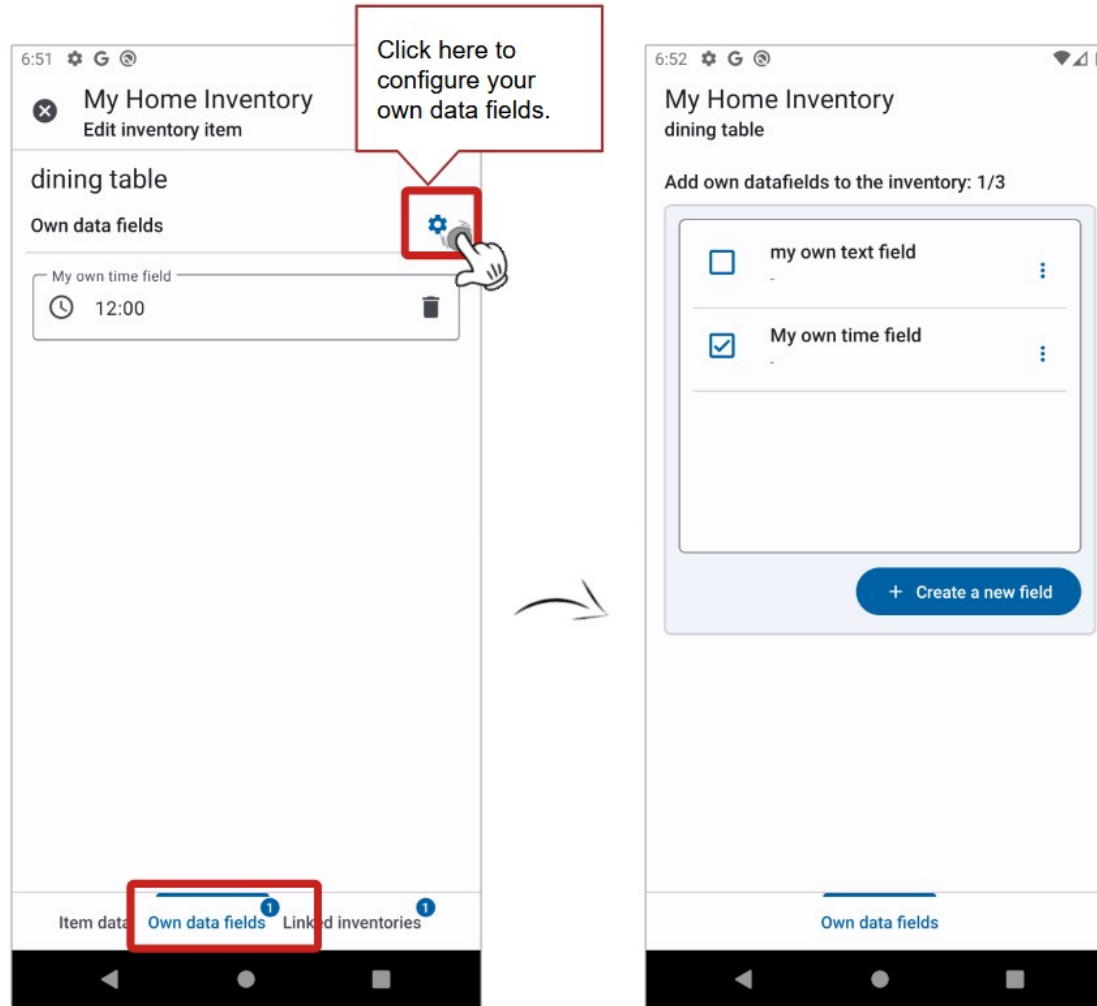
This chapter describes the added or improved functionalities in more detail:

Content of this chapter

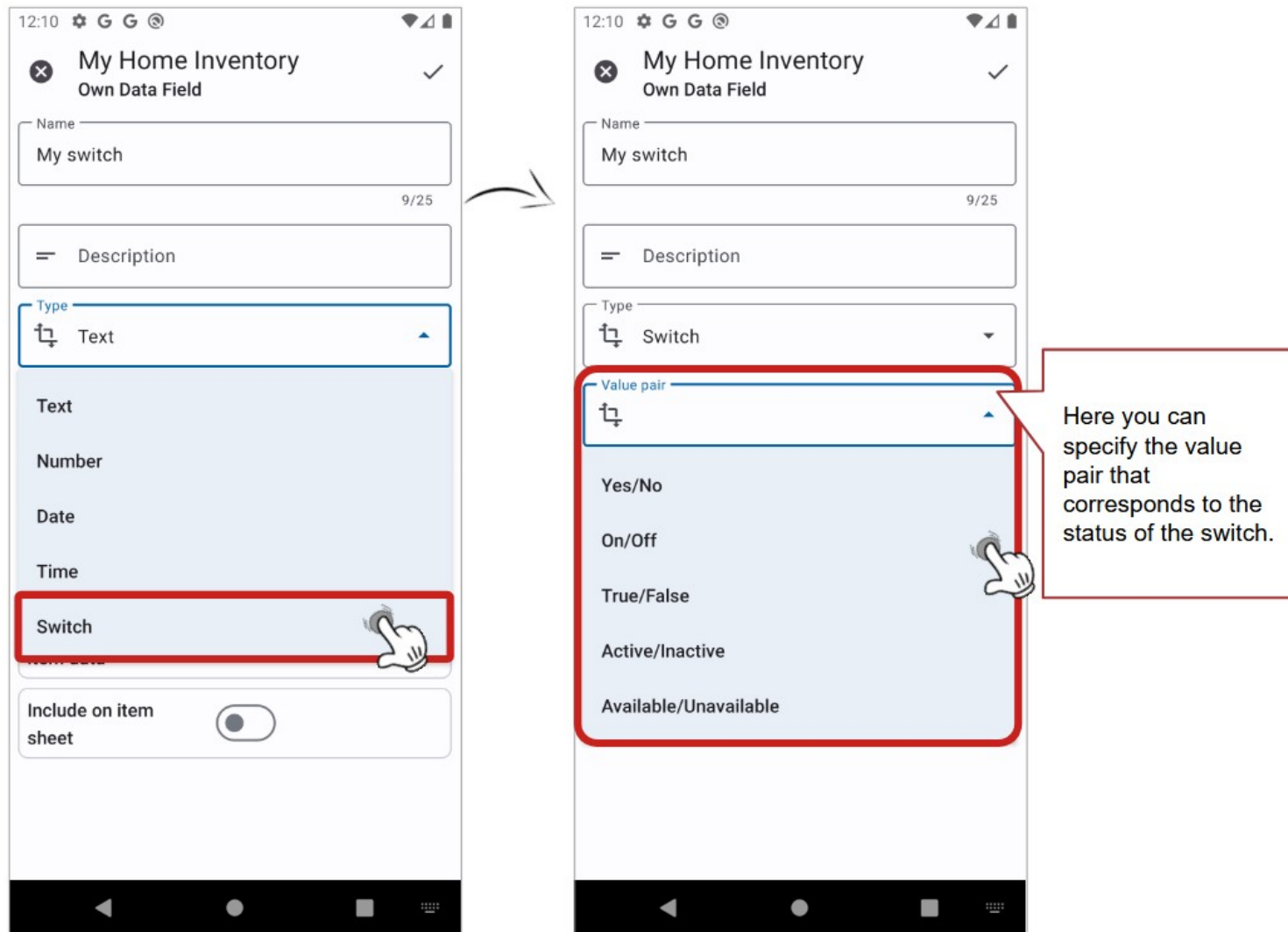
2.1 Own data field – type “switch”.....	4
2.2 Other improvements and corrections (bug-fixes).....	6

2.1 Own data field – type “switch”

The custom data fields now also support the “switch” type.



The switch type is available via the “field type”. You can then specify the value pair that corresponds to the status of the switch.



2.2 Other improvements and corrections (bug-fixes)

This version includes the following improvements/fixes:

N.º of issue	Description of the improvement/fix issue
#469	Excel Export – own fields are not exported completely