

My Inventory



What's new in version 1.8.9

(c) Thomas Koslowsky

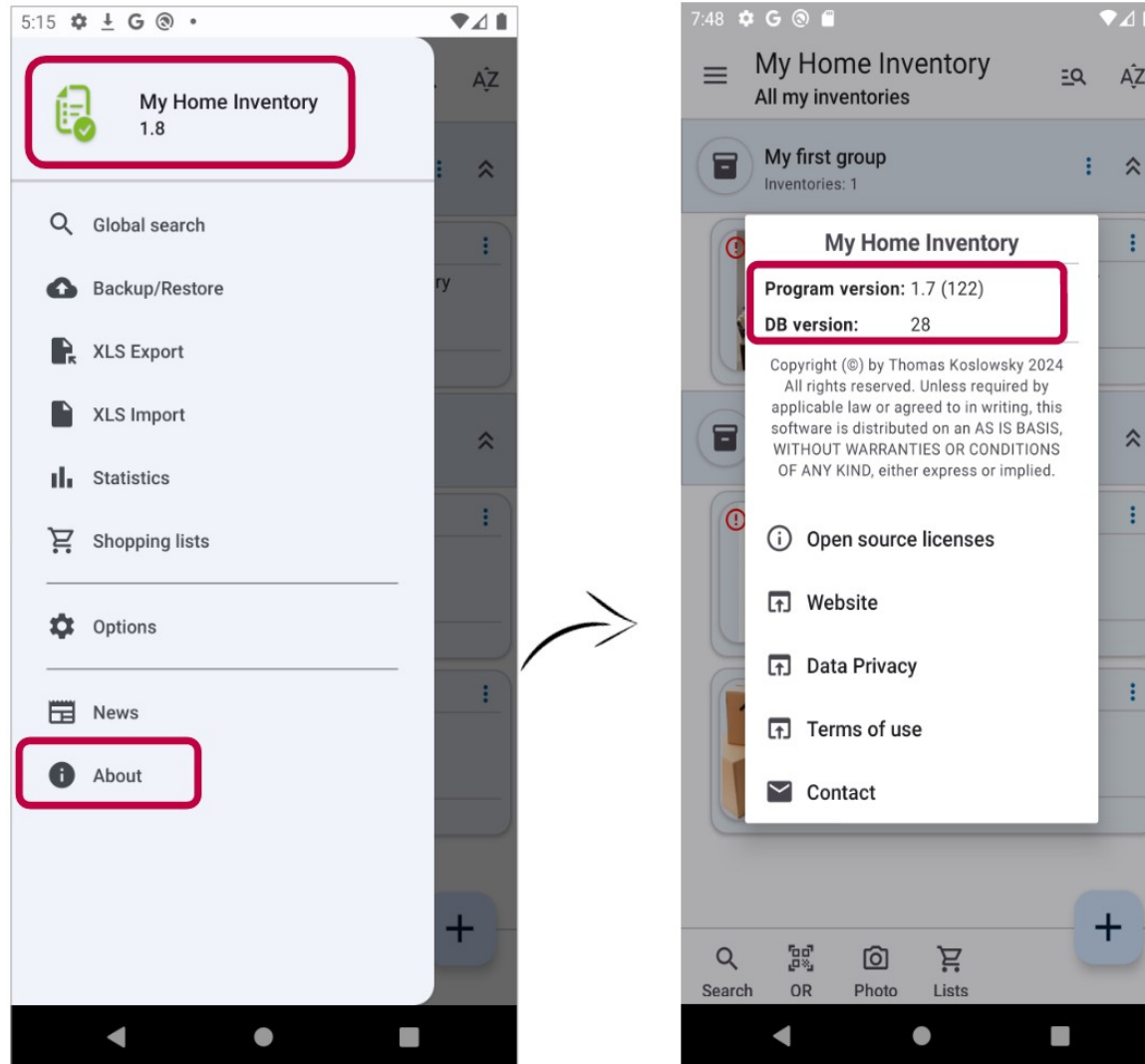
Internet: www.thomaskoslowsky.com

Mail: thomas@thomaskoslowsky.com

Application website: www.miinventariopersonal.com

1 Introduction

This document includes what's new in version 1.8.9. You can check the version you have installed directly in the application, through the “main menu” -> “About”.



2 What's new in this version

This chapter describes the added or improved functionalities in more detail:

Content of this chapter

2.1 New data field "max. stock".....	4
2.2 Updated Excel import-/export-file format.....	5
2.3 Other improvements and corrections (bug-fixes).....	6

2.1 New data field "max. stock"

You can now also manage a maximum stock amount for inventory items. If you do not want to use this new field, you can select or deselect it (and others) in the inventory configuration.

11:02 My Home Inventory Edit inventory item

Name of the item* dining table

ID #00000002

Rating ★★★★★

Barcode/QR-code 123456

Reference

Quantity # 1

Min. stock # Max. stock

Description

Tag/Category

Item data Own data fields 1 Linked inventories 1

11:01 My Home Inventory Edit inventory

Name of the inventory* My first inventory

Description Description for my inventory

Default currency € EUR

Configure data fields

Barcode/QR-code 12

QR

Part of the following group(s)

11:01 My Home Inventory My first inventory

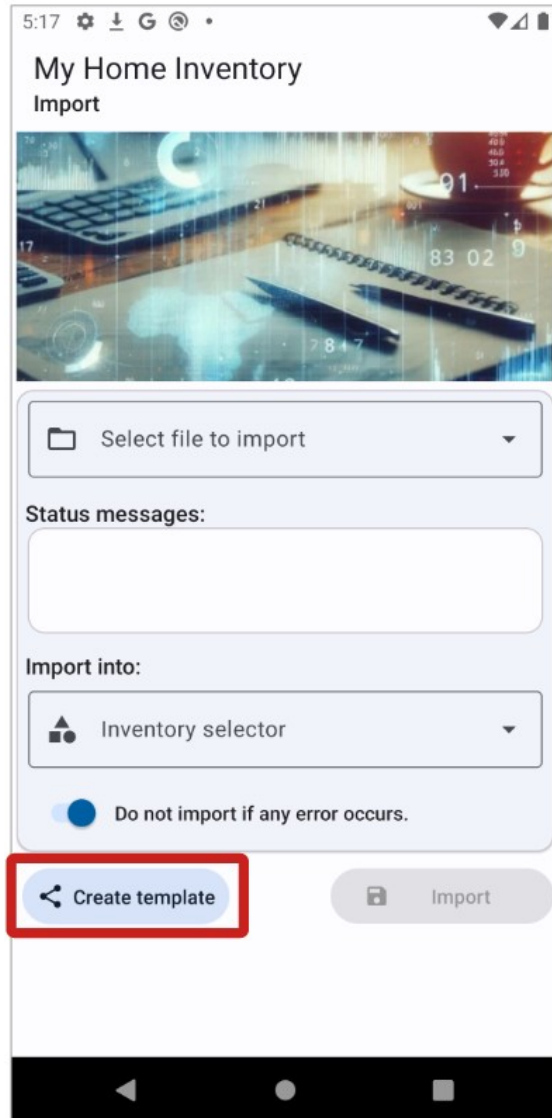
Choose the fields to show in the inventory.

- Dimensions
- Weight
- Purchase date
- Expiration date
- Warranty end date
- Purchased at/source
- Web-links
- Initial value
- End of life value
- Minimum stock
- Maximum stock
- Item ID

Default fields Own data fields

2.2 Updated Excel import-/export-file format

Please note that the Excel import and export format has changed and the new field "Maximum inventory" has been added. You will receive the updated import format as usual from the application:



2.3 Other improvements and corrections (bug-fixes)

This version includes the following improvements/fixes:

N.º of issue	Description of the improvement/fix issue
#512	Excel Import – The error messages should be more understandable.
#515	Image editing window – the image is now zoomed to the visible space when first opened.