

My Inventory



What's new in version 1.8

(c) Thomas Koslowsky

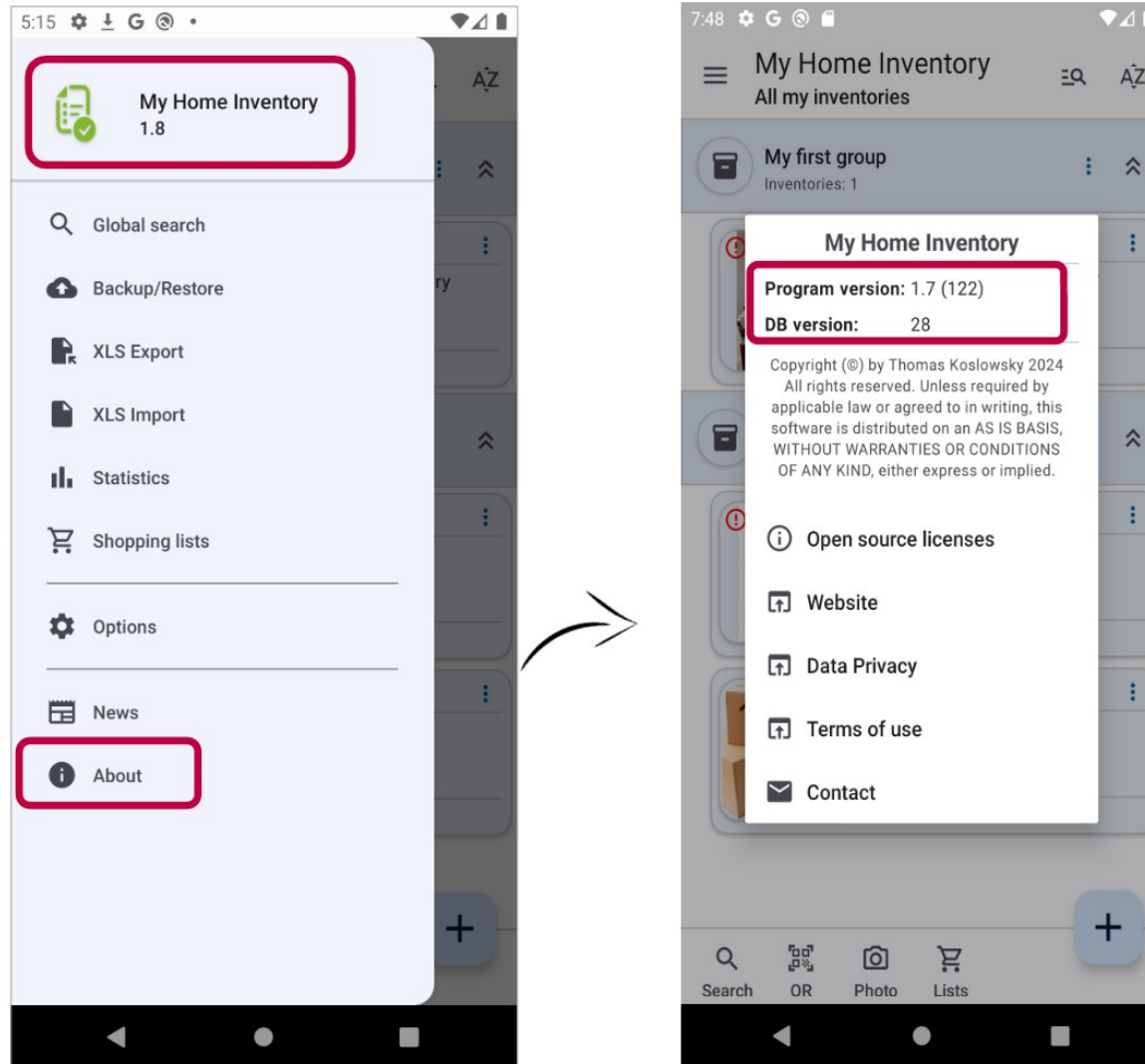
Internet: www.thomaskoslowsky.com

Mail: thomas@thomaskoslowsky.com

Application website: www.miinventariopersonal.com

1 Introduction

This document includes what's new in version 1.8. You can check the version you have installed directly in the application, through the “main menu” -> “About”.



2 What's new in this version

This chapter describes the added or improved functionalities in more detail:

Content of this chapter

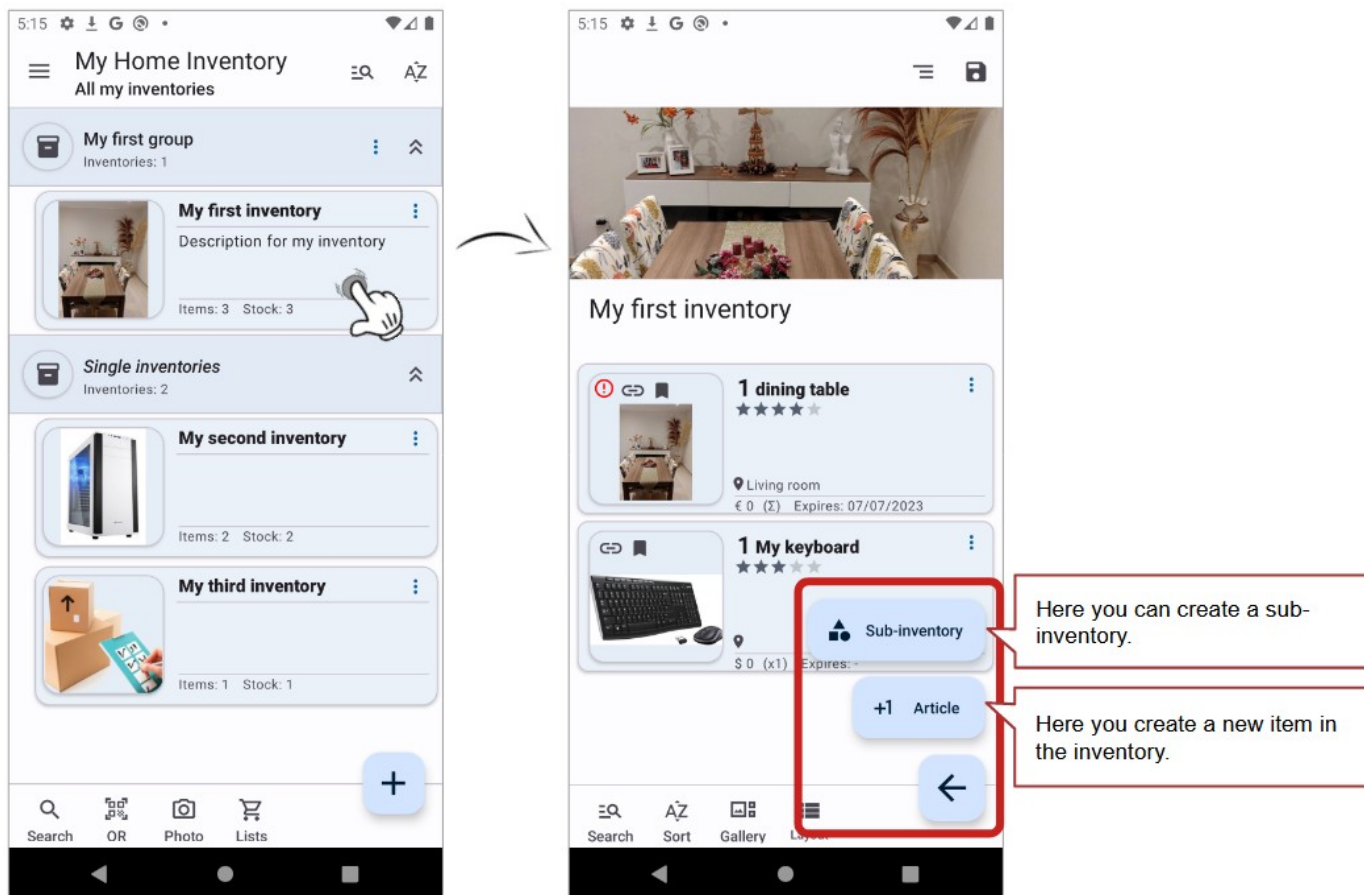
2.1 Sub-Inventories.....	4
2.1.1 Creating a sub-inventory.....	4
2.1.2 Editing, moving and deleting of sub-inventories.....	6
2.1.3 Important information.....	7
2.2 Importing article data.....	8
2.2.1 The import function.....	9
2.2.2 The import file.....	10
2.2.3 Important information.....	11
2.2.4 Import – error messages.....	11
2.3 Other improvements and corrections (bug-fixes).....	12

2.1 Sub-Inventories

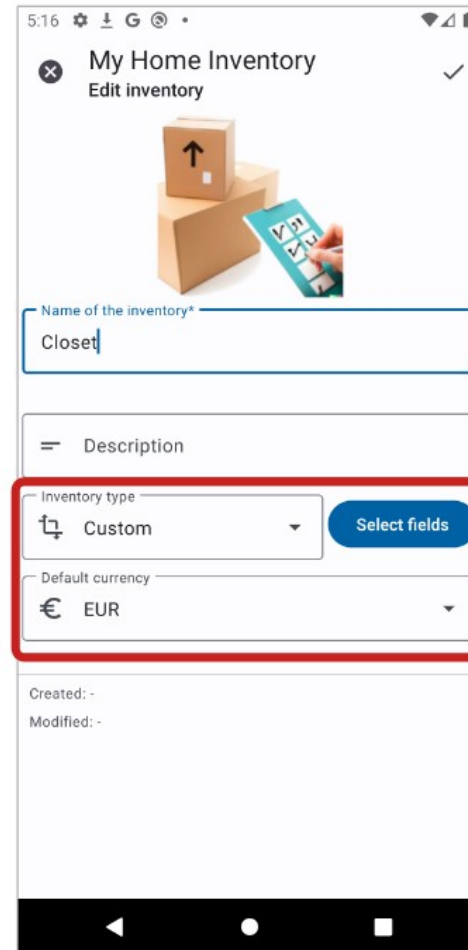
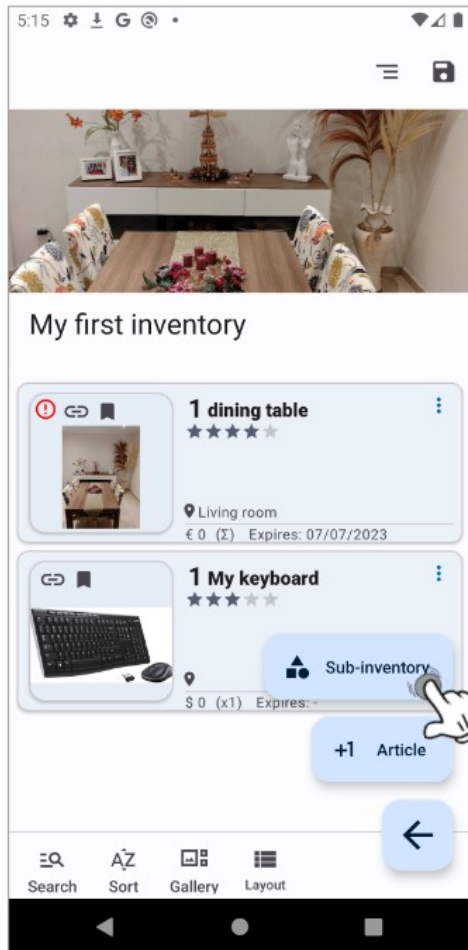
You now have the option of creating sub-inventories in inventories. This allows you to structure your inventory better. For example, you can create an inventory for your garden shed and then a sub-inventory for the kitchen, living room and bedroom. You can also structure it even more deeply, e.g. "large cupboard in the bedroom" as a sub-inventory in the "bedroom".

2.1.1 Creating a sub-inventory

To add a sub-inventory to an inventory, click the "Add" button and then click "Sub-inventory". You can then specify additional data.



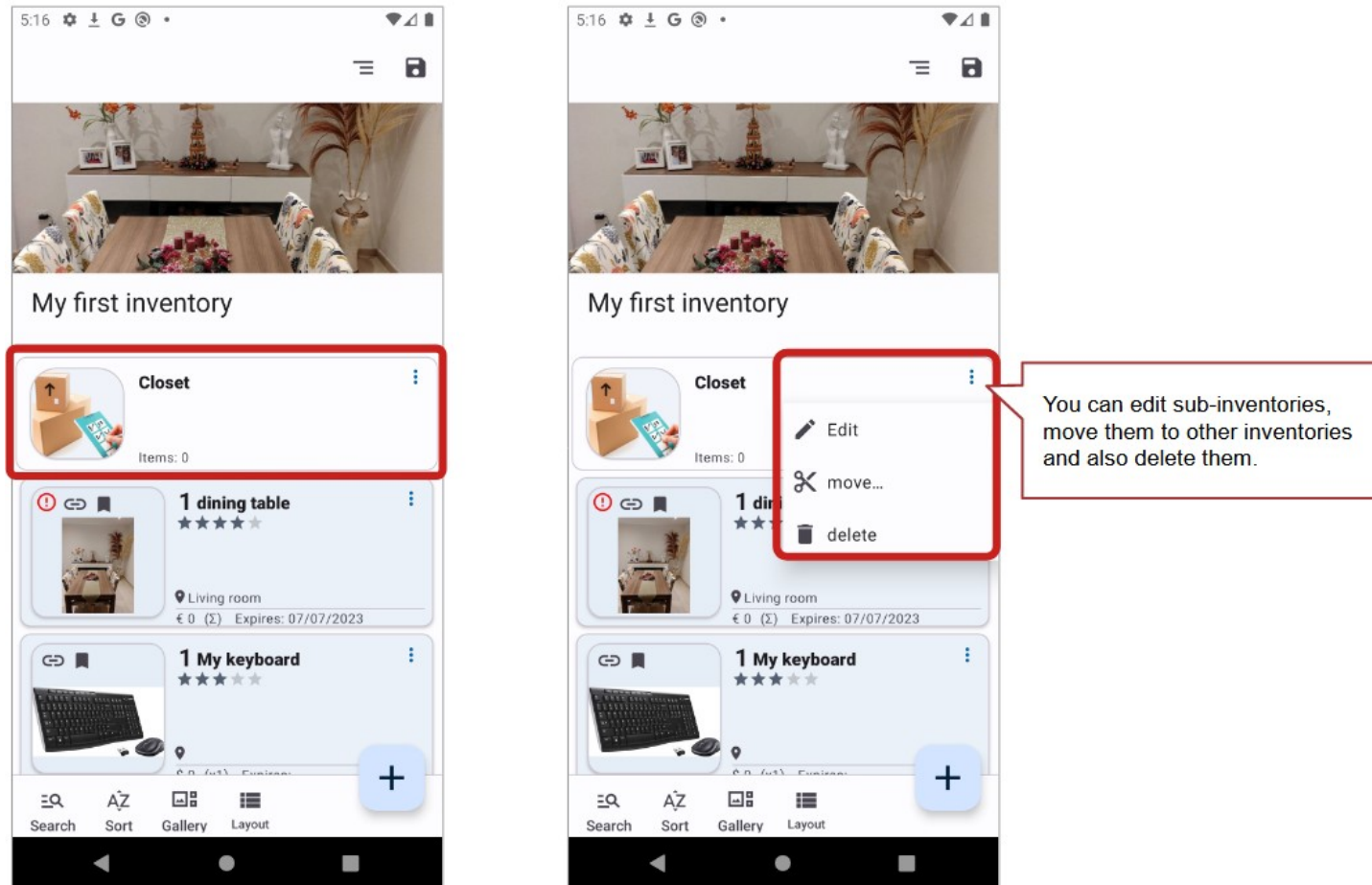
The inventory type, field selection and default currency are inherited from the parent inventory and can then be customized.



The inventory type, field selection and default currency are inherited from the parent inventory and can then be customized.

2.1.2 Editing, moving and deleting of sub-inventories

You can later adjust the properties of a sub-inventory (swipe it left or edit menu), move it to another parent inventory and also delete it (swipe it right or delete menu).



2.1.3 Important information

- In version 1.8, statistics cannot yet be created for sub-inventories.
- The number of items displayed in the list view refers to the items that are directly contained in the inventory and does not include the items in the corresponding sub-inventories.
- When deleting a sub-inventory, all items contained in it are also deleted. This cannot be undone.

2.2 Importing article data

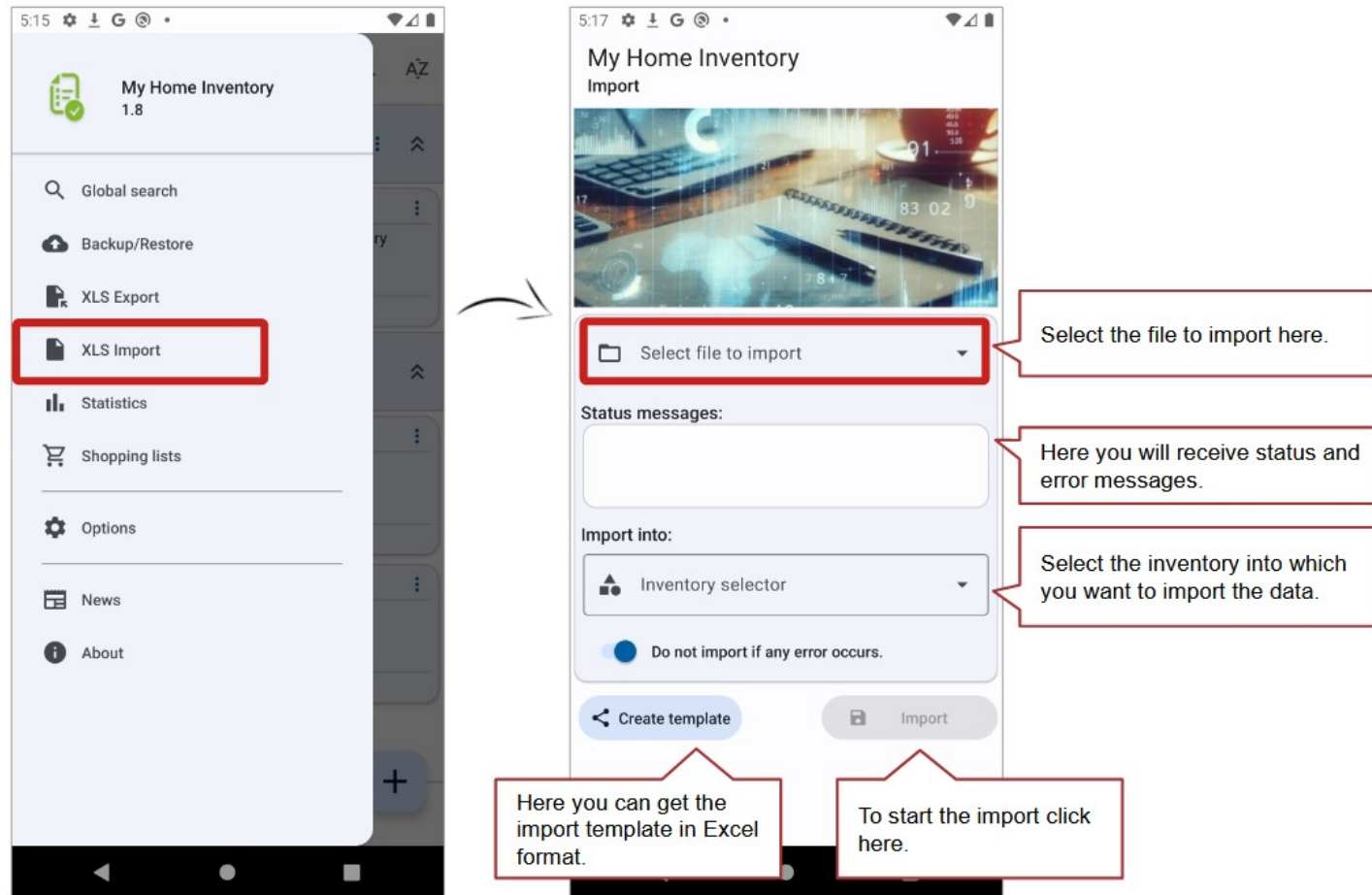
You have the option of importing external item data into an inventory. This requires a special Excel template, which you can get directly from the application. Up to 100 lines (item data) can be imported per import file.

To import data into an inventory, follow these steps:

1. Get the Excel template from the application
2. Fill the Excel template with your external data (maximum 100 data records per file)
Note the necessary formatting of the respective columns/data fields
3. Select the filled Excel file in the application for import
After selection, the application checks the contents for the expected format and displays any inconsistencies found.
4. Correct any format errors that may occur in the import file
The import can only be started after all format errors have been corrected.
5. Select the inventory into which the data is to be imported
6. Start the import process
The result and information about any errors that may occur are displayed in the information area.
By default, if errors occur in a row, no data is imported, even from correctly read rows. You can adjust this so that all correctly read rows are imported and incorrect rows are ignored.
Please note that if you import the same file repeatedly, new articles will be created each time.

2.2.1 The import function

The import function is based on an Excel file with a predefined format. You get the Excel template directly from the application. You can then fill it with your data and import it into an inventory.



2.2.2 The import file

You get the Excel template directly from the application.

	A	B	C	D	E	F	G	H
1	InvImport_1.1	https://miinventariopersonal.com/en/						
2	Important: When importing, the data will be read from row 5 onward. Neither change the rows 1 to 4, nor the column order. Row 1: File version. Row 3: supported data types and format. Row 4: Name of the destination field. Row 5: an example (can be deleted/overwritten)							
3	integer, optional The ID, if indicated, must exist in the Inventory database, if not, the line will not be imported.	positive integer, optional Default: 1	positive integer, optional	text, mandatory	text, optional	optional, Integer (0-5) Or Text (*****)	text, optional Can contain an optional leading format indicator. Supported format indicators: [QR]: [EAN_8]: [EAN_13]: [PDF_417]: [AZTEC]: [MATRIX]: [C_128]:	text, optional
4	Item ID	Quantity	Minimum stock	Name	Description	Rating	QR/Barcode	Tag/Categ
5	12345678	1	1	Sample article	Sample description	5	[EAN_13]: 128767744327	Sample ca
6								
7								

Lines 1 to 4 contain important information about the content and format. From line 5 onwards, the data to be imported is expected. Each column represents a data field, the title of which is given in line 4. Line 3 contains further information about each data field, including the supported format.

In the template generated by the application, there is a sample data record in line 5. Please replace this with your data.

You can currently import up to 100 lines per import file. An empty line is interpreted as the end of the data to be imported.

2.2.3 Important information

Please note:

- A maximum of 100 lines can currently be imported per import file.
- Each item to be imported must contain at least one name.
- When importing, a new item is created in the inventory for each line.
- If the same file is imported repeatedly, new items are also created. There is no check for existence unless you specify an existing item ID in the import file.
- If an item ID is specified, it must belong to an existing item. If this is not the case, the line will not be imported and an error will be generated. If an item with the same ID is found, it will be updated with the new data. The item does not have to be in the selected target inventory. If the item is part of another inventory, a link to this item will be created in the target inventory.

2.2.4 Import – error messages

Immediately after selecting an import file, the application checks the contents for the expected format and displays any discrepancies found. All rows and columns with errors are listed.

If errors occur during the import process, these are also listed. The row that led to an error and one of the following error codes are listed here:

- "U1"
Error when attempting to update an existing item. This can be the case, for example, if you have specified a non-existent item ID in the import file.
- "U2"
The existing item could be updated, but then could not be assigned to the inventory.
- "I1"
The item could not be inserted in the inventory.

2.3 Other improvements and corrections (bug-fixes)

This version includes the following improvements/fixes:

N.° of issue	Description of the improvement/fixed issue
#401/#402	The currency symbol is not always displayed correctly.
#403	When restoring files from a WebDAV backup, error messages stating that the process would abort occurred even though the file was restored correctly.
#404	The text filter function in the title bar of the main view (groupings/inventories) does not filter correctly.
#405	OneDrive Client - improve detail level on error reasons